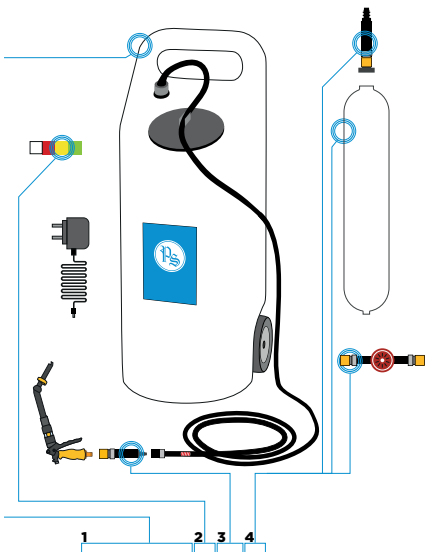


# Accessories

## FILLING PUMPS & GUNS



### HYDROFILL™ PRO

#### WATER WHEN YOU NEED IT, WHERE YOU NEED IT

#### FEATURES

- 60 liter tank
- Tactile LCD display
- Integrated deioniser
- Cartridge & timer
- Battery powered
- Purity sensor
- Discharge indicator
- Low water alert
- Diagnostic information
- Multi-language
- Gun-X + adapter



#### ▶ BAT/48311

The HydroPure™ deioniser cartridge fits inside the #HydroFill™ PRO making it the only mobile water cart with an integrated deioniser. You can now make pure water instantly, taking it to the batteries that need it, wherever they are.

#### SPECIFICATIONS

- Maximum capacity: 60L
- Height: 1.000 mm
- Width: 350 mm
- Output hose length: 3 m
- Water pressure: 14,5 psi / 1 bar
- Wheel size: 150 mm
- Shipping weight: 8 kg
- Max weight: 72,7 kg
- Controls: single button and 16 x 2 line OLED display

#### BENEFITS

- Easy to use
- Robust
- Transport water easily
- No assembly required

## FILLING PUMP



#### ▶ BAT/34880

Mobile filling system 60 litres (Battery 12V 6.5Ah + battery charger - water pump (ca. 17L/min, 1,9 bar) - 3 meter tube - 1 linking set for the fast filling system - 1 filling gun with automatic switch off.

#### ▶ BAT/21534

water pump

## DRAIN PUMPS



#### ▶ BAT/34894

Manual system to drain battery cases. Acid proof synthetic, content: 6 litres, PVC suction tube 6 mm diam.



#### ◀ BAT/34890

Electric pump with 12V battery included to drain superfluous water out of the container. Pipe to put between the cells: Ø 6 mm  
Water bottle 60 litres  
Capacity pump: 2,7L/min.  
12V battery + charger included.

# Accessories

## FILLING PUMPS & GUNS



### ▶ **BAT/15145**

20 litres tank, 3m tube, filter, flow indicator and link.

### ▶ **BAT/28944**

20 Litres tank, 3m tube, Flow-indicator (BAT/12420), fast connector (BAT/15229) + filling gun (BAT/29133) with fast connector (BAT/16298), makes it possible to fill with automatic filling plugs or with water gun.



### ▶ **BAT/15144**

60 litres tank, 3m tube, filter, flow indicator and link.

### ▶ **BAT/17594**

60 Litres tank, 3m tube, Flow-indicator (BAT/12420), fast connector (BAT/15229) + filling gun (BAT/29133) with fast connector (BAT/16298), makes it possible to fill with automatic filling plugs or with water gun.



### ▶ **BAT/12419**

Water tank 20L with tap  
X x Y x H: 353 x 165 x 446 mm



### ▶ **BAT/15832**

Water tank 60L with tap  
X x Y x H: 460 x 350 x 500 mm



### ▶ **BAT/39588**

Tap for water tank 60L

## AUTOMATIC WATERVALVE



### ▶ **BAT/48449**

Automatic Watervalve (220V)  
Works on every charger.  
The valve is connected by the charger which gives the "end of charge" signal and opens the valve for an xx adjustable time.

## WATER BOX



### ◀ **BAT/17586**

Water bottle with demineralised water - 30L



▶ **BAT/35007**

Water tank 1000L with tap - filled with demineralised water.

▶ **BAT/28837**

Water tank 1000L with tap - empty.



**BAT/50212**

Connector Ø 10 to fix the accessories

Accessories :

**BAT/16286** PVC filling tube Ø 10

**BAT/12420** Flow indicator

**BAT/15229** link female (to fill the batteries with automatic filling system)

**BAT/29133** filling gun – not acid proof (to fill the batteries without automatic filling system)



▶ **BAT/29133**

Solid water filling gun with ergonomic rubber handles - 25 cm



▶ **BAT/49468 - S-Type**

Watering gun for stationary battery applications.



▶ **BAT/49469 - RR-Type**

Watering gun for railroad battery applications.



▶ **BAT/46019 - X-Type**

Battery watering gun. This watering gun is popular for its reliable automatic shutoff and its ability to water batteries.

NOTE: for best results, remove baskets in flip top vent plugs. They are not required with automatic pistols.