



BATTERY ACCESSORIES

FILLING PUMPS & GUNS

QUICK FILL

Vacuum filling system under pressure for batteries: charges car batteries in 30 seconds!

BAT/22508

Quick Fill is a vacuum filling pump driven by air pressure. It's a compact device made of corrosion-proof PVC & steel. The filling pump fills the starting and traction batteries with acid. It's simple in use and absolutely spill free! It's a most reliable device with only two moving practically maintenance-free air valves.

This makes the Quick-Fill one of the most reliable and quickest filling systems in the battery world.



Size: 35.5 x 19 x 48 cm
Weight: 8 kg
Pressure: 1,4 - 2,8 bar

CHARACTERISTICS

- Quick-Fill is driven vacuously, so the acid is never under pressure. In this way, you avoid splashes.
- Fills no damaged or leaking batteries
- User-friendly, easy, safe & without spilling
- Reliable & practically maintenance-free: only 2 moving parts
- Made of corrosion-proof PVC & steel
- With overflow protection
- Filler cap + adjustment parts included

BATTERY PUMP

- To pump acids, ...
- Wireless.
- With fixed or flexible spout.
- 12V battery + charger included
- Capacity: 18 L/min.



BAT/35752 : Battery pump 70

Battery pump with fixed spout
Pump tube length: 700 mm

BAT/35758 : Battery pump 100

Battery pump with fixed spout
Pump tube length: 1000 mm

BAT/35754 : Battery pump 70

Battery pump with flexible spout
Pump tube length: 700 mm

BAT/35756 : Battery pump 100

Battery pump with flexible spout
Pump tube length: 1000 mm

With adaptor



A
(Ø 40 - 70 mm)



B
(R2)



C
(Mauser 2)



D
(Tri-Sure)



▶ **BAT/15102**
Automatic filling system for acid (220 Volt)



▶ **BAT/15103**
Automatic filling system for acid (220 Volt)



▶ **BAT/15161**
Half-automatic filling system for acid (under pressure)



▶ **BAT/18131**
Manual siphon pump



▶ **BAT/15173**
Battery filler



▶ **BAT/15162**
Filling pump for acid / distilled water.



▶ **BAT/35793**
Manual barrel pump. Completely in PE. Perfect to pump little quantities. Very resistant to acids and bases.



▶ **BAT/35793**
Water filling pump



▶ **BAT/15167**
Acid proof funnel



▶ **BAT/23062**
Universal pump to pump up among other things demineralised water. **Not appropriate for battery acid!** 220V.



▶ **BAT/18133 : 1 L**
BAT/18135: 2L
BAT/18137: 3L
BAT/18139: 5L
Measure synthetic with spout, handle, in unbreakable polyethylene.

▶ **BAT/18141 :** 1L for ref 18133
BAT/18143: 2L for ref 18135
BAT/18145: 3/5L for ref 18139/18137
Flexible spout for measure.



▶ **BAT/18809 - 1 L**
▶ **BAT/19457 - 2 L**
Automatic battery filler (1 litre). Stops automatically when the desired level is reached.



▶ **BAT/18147**
Filling bottle 500 ml



▶ **BAT/18528**
Foot-pump appropriate for barrels up to 120 L
Pump 14 cm diam. - Tube 150 cm



▶ **BAT/18530**
Hand-pump appropriate for barrels up to 60 L



BATTERY ACCESSORIES

FILLING PUMPS & GUNS

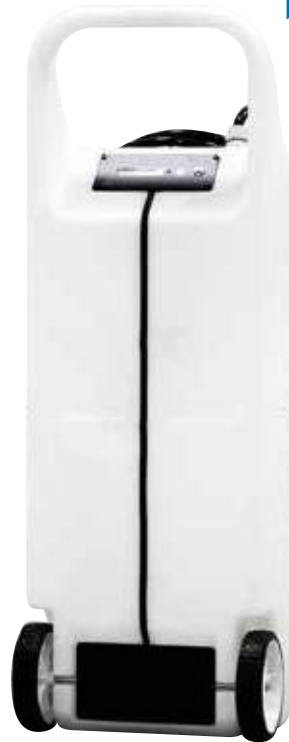


HYDROFILL™ PRO

WATER WHEN YOU NEED IT, WHERE YOU NEED IT

FEATURES

- 60 liter tank
- Tactile LCD display
- Integrated deioniser
- Cartridge & timer
- Battery powered
- Purity sensor
- Discharge indicator
- Low water alert
- Diagnostic information
- Multi-language
- Gun-X + adapter



BAT/48311

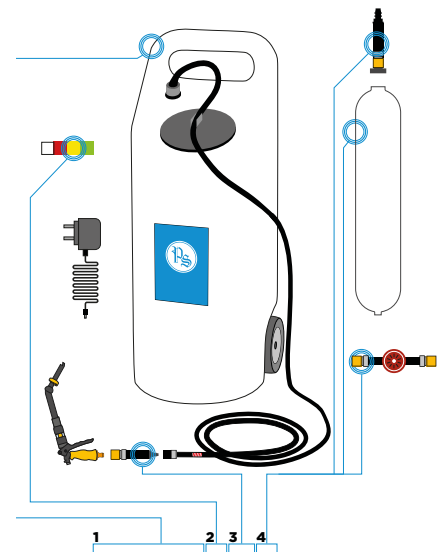
The HydroPure™ deioniser cartridge fits inside the #HydroFill™ PRO making it the only mobile water cart with an integrated deioniser. You can now make pure water instantly, taking it to the batteries that need it, wherever they are.

BENEFITS

- Easy to use
- Robust
- Transport water easily
- No assembly required

SPECIFICATIONS

- Maximum capacity: 60L
- Height: 1.000 mm
- Width: 350 mm
- Output hose length: 3 m
- Water pressure: 14,5 psi / 1 bar
- Wheel size: 150 mm
- Shipping weight: 8 kg
- Max weight: 72,7 kg
- Controls: single button and 16 x 2 line OLED display



BAT/48311



BAT/17347

Mobile filling system 60 litres
60 litres
Electric pump
Dim.: 400 x 350 x 640 mm
12V VRLA battery + charger included



BAT/17346

Mobile filling system 60 litres
(Battery 12V 6.5Ah + battery charger - water pump (ca. 10L/minute) - 3 meter tube - 1 linking set for the fast filling system - 1 filling gun).

BAT/21534

water pump



BAT/34880

Ditto as **BAT/17346** but with **filling gun with automatic switch off**, combined with a water-pump with increased capacity. (17L/min, 1,9 bar.



BAT/15100

Mobile filling system for traction batteries (50 litres tank, electric pump, 12 Volt battery, 1 filling gun).

DRAIN PUMP



BAT/17349

Portable system to drain superfluous water out of the battery container.
Size: 140 x 170 x 220 mm
12V battery connection included.



BAT/34890

Electric pump with 12V battery included to drain superfluous water out of the container.
Pipe to put between the cells:
Ø 6 mm
Water bottle 60 litres
Capacity pump: 2,7L/min.
12V battery + charger included.



BAT/34894

Manual system to drain battery cases.
Acid proof synthetic, content: 6 litres, PVC suction tube 6 mm diam.



BAT/15105

Electrical pump with 12V battery connection to drain superfluous water out of the container.



BAT/15104

Ditto as **BAT/15105** but to work outside the house. With 12V battery connection.



BAT/15145

20 litres tank, 3m tube, filter, flow indicator and link.



BAT/15144

60 litres tank, 3m tube, filter, flow indicator and link.



BAT/12419

Water tank 20L with tap
X x Y x H: 353 x 165 x 446 mm



BAT/15832

Water tank 60L with tap
X x Y x H: 460 x 350 x 500 mm

BAT/28944

20 Litres tank, 3m tube, Flow-indicator (BAT/12420), fast connector (BAT/15229) + filling gun (BAT/29133) with fast connector (BAT/16298), makes it possible to fill with automatic filling plugs or with water gun.

BAT/17594

60 Litres tank, 3m tube, Flow-indicator (BAT/12420), fast connector (BAT/15229) + filling gun (BAT/29133) with fast connector (BAT/16298), makes it possible to fill with automatic filling plugs or with water gun.



BAT/17690

Barrel 500 L



BAT/39588

Tap for water tank 60L



BATTERY ACCESSORIES

FILLING PUMPS & GUNS



◀ **BAT/35007**

Water tank 1000L with tap - **filled** with demineralised water.

◀ **BAT/28837**

Water tank 1000L with tap - **empty**.

BAT/39945

Connector Ø 10 to fix the accessories

Accessories :

BAT/16286 PVC filling tube Ø 10

BAT/12420 Flow indicator

BAT/15229 link female (to fill the batteries with automatic filling system)

BAT/29133 filling gun – not acid proof (to fill the batteries without automatic filling system)

AUTOMATIC WATERVALVE

▶ **BAT/48449**

Automatic Watervalve (220V)

Works on every charger.

The valve is connected by the charger which gives the “end of charge” signal and opens the valve for an xx adjustable time.



ELECTRIC PUMP FOR WATER BOX

◀ **BAT/48454**



Modular system that can be placed on any water canister. It consists of a basic housing with adapter, an electric submersible pump and a hose pack with female coupling.

The basic version has a plug-in power supply 12V/3A with 2m cable, the mobile version is equipped with a universal car plug.

▶ **BAT/17586**

Water bottle with demineralised water - 30L



BAT/44632 ▶

Water bottle with demineralised water - 5L





▶ **BAT/15138**
Bottle with acid - 30kg



◀ **BAT/28447**
Acid 1 litre



▶ **BAT/29340 - C-Type**

Water filling system with automatic switch off when the desired level is reached. To let the switch off function right, minimum 1 bar is required. Diam. 16mm - 8 litres/minute.



▶ **BAT/29133**
Solid water filling gun with ergonomic rubber handles - 25 cm



▶ **BAT/46019 - X-Type**

Battery watering gun. This watering gun is popular for its reliable automatic shutoff and its ability to water batteries.

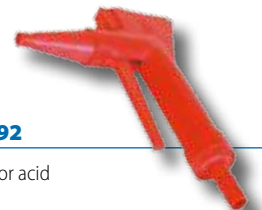
NOTE: for best results, remove baskets in flip top vent plugs. They are not required with automatic pistols.



▶ **BAT/23297**
Filling gun with fill pipe 25 cm



▶ **BAT/15099**
Filling gun for stationary batteries 520 mm.



▶ **BAT/15192**
Filling gun for acid



▶ **BAT/34876**
Filling gun with level indicator (LED).



▶ **BAT/33624**
Filling gun



▶ **BAT/15098**
Programmable acid proof Filling gun with indication lamp.

RECEPTACLES



Oval jerry cans of hard polyethylene		
BAT/34955	10 L	DIN 51
BAT/34957	20 L	DIN 61
BAT/34959	30 L	DIN 61
Accessories: screw cap with tap and sealing		
BAT/34961	for 10 L barrels	
BAT/34963	for 20, 30 and 60 L barrels	