



BATTERY ACCESSORIES

COMPONENT LIST FOR TRACTION BATTERIES



STANDARD FILLING PLUG

← **BAT/16277**

Manual filler cap Ø 35, colour black



STANDARD AUTOMATIC FILLING PLUG

← **BAT/17368**

automatic standard filler cap = Europush = Push-in

MANUAL FILLING PLUG WITH REGENERATION FUNCTION



← **BAT/31572**

Reconverts the water vapours as much as possible in fluid. Adjustable height. Push-in connection



AUTOMATIC FILLING PLUG (BS)

← **BAT/45641**

PUSH-IN FILLING PLUG (BS) WITH FLOAT HOUSING



BAT/45698 ▶



← **BAT/48164** with floater 54

BAT/48165 with floater 58

BAT/48166 with floater 62

BAT/48167 with floater 66

BAT/48168 with floater 70

KIT AUTOMATIC FILLING SYSTEM

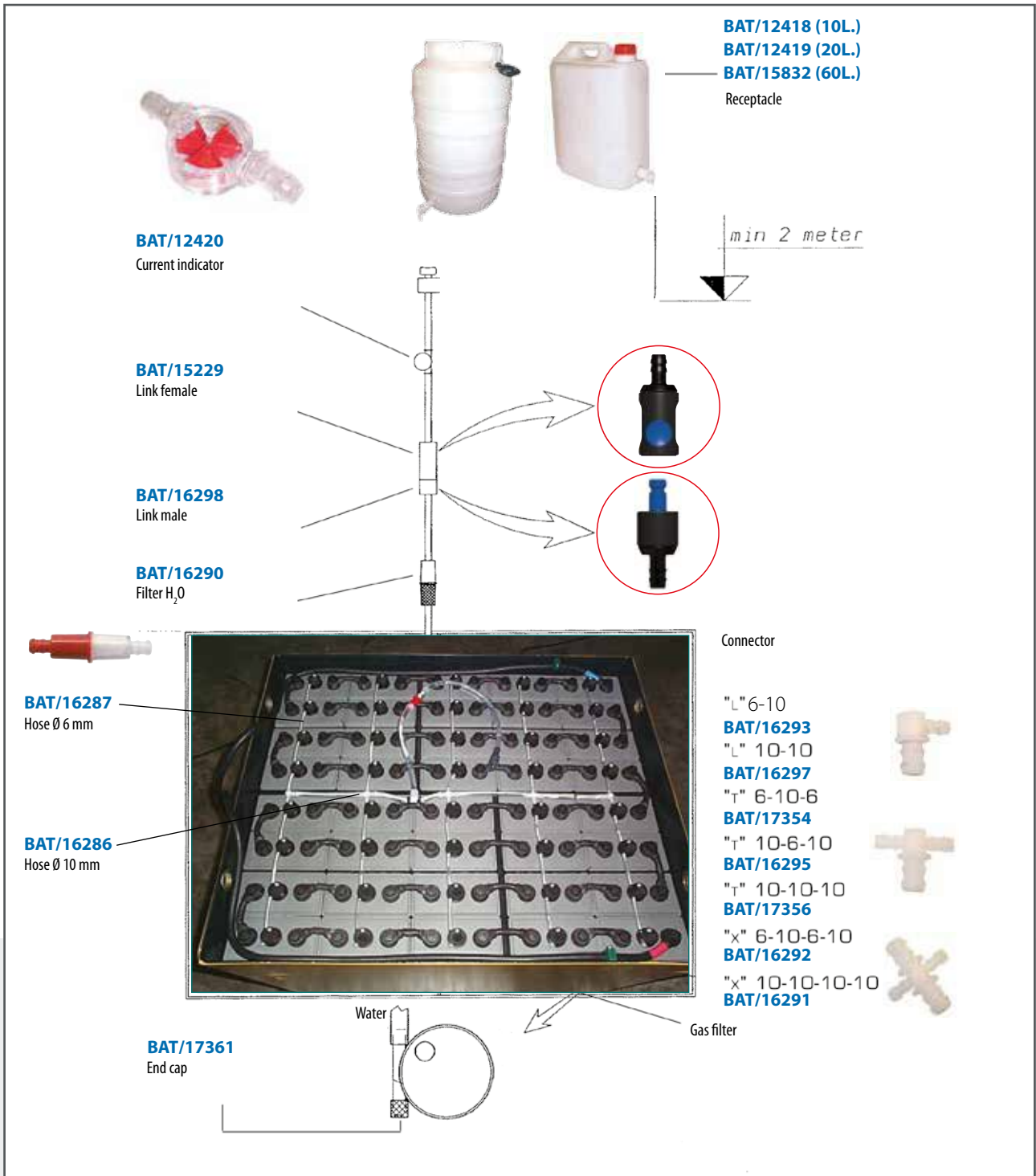
Automatic filling plug (type Europush 35), floater, hose, connectors, filter, link (M), end cap ...

KIT	VOLTAGE	FLOATER
BAT/44547	12V	34
BAT/42417	12V	39
BAT/20178	24V	14
BAT/20180	24V	20
BAT/20182	24V	24
BAT/20175	24V	29
BAT/20185	24V	34
BAT/20012	24V	39
BAT/45439	24V	44
BAT/20188	24V	49
BAT/20190	24V	59
BAT/20239	36V	14
BAT/20241	36V	20
BAT/20243	36V	24
BAT/20245	36V	29

KIT	VOLTAGE	FLOATER
BAT/20247	36V	34
BAT/20249	36V	39
BAT/20251	36V	49
BAT/20253	36V	59
BAT/20192	48V	14
BAT/20194	48V	20
BAT/20196	48V	24
BAT/20177	24V	29
BAT/20199	48V	34
BAT/20201	48V	39
BAT/41909	48V	44
BAT/20203	48V	49
BAT/20205	48V	59
BAT/20223	72V	14
BAT/20225	72V	20

KIT	VOLTAGE	FLOATER
BAT/20227	72V	24
BAT/20229	72V	29
BAT/20231	72V	34
BAT/20233	72V	39
BAT/20235	72V	49
BAT/20237	72V	59
BAT/20207	80V	14
BAT/20209	80V	20
BAT/20211	80V	24
BAT/20213	80V	29
BAT/20215	80V	34
BAT/20217	80V	39
BAT/20219	80V	49
BAT/20221	80V	59

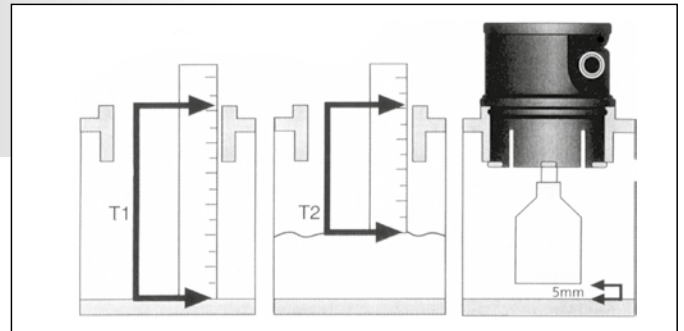






BATTERY ACCESSORIES

COMPONENT LIST FOR TRACTION BATTERIES



SET-UP

1. Determine the right battery filling plug by type and brand of the battery.
2. Determine the length of the float of T1 and T2.
3. Determine the length of the plastic tubes.
4. Install the tubes for the central water-filling system.

SELECT THE RIGHT BATTERY FILLING PLUG

Bajonet Euro 35 M27 M30

DETERMINATION OF THE FLOAT

- T1** Determine the distance between the top of the battery plates to the top of the battery cell opening.
T2 Determine the distance between the battery fluid and the top of the battery cell opening.
T3 Verify after selecting the float the free space, which has to be at least 5 mm.

BAT/ float nr	BAT/17374	BAT/17375	BAT/17376	BAT/17377	BAT/17378	BAT/17379	BAT/17380	BAT/17381
	T1 T2	T1 T2	T1 T2	T1 T2	T1 T2	T1 T2	T1 T2	T1 T2
Europush 35	42/29	47/34	51/39	56/42	61/46	66/50	76/57	86/66
Bayonet connection	27/14	33/20	37/25	42/28	47/32	52/36	62/43	72/42
Screw thread M27/M30	30/17	36/23	40/28	45/31	50/35	55/39	65/46	75/45

FLOATS



Reference	BAT/17374	BAT/17375	BAT/17376	BAT/17377	BAT/17378	BAT/17379	BAT/17380	BAT/17381
Dimensions	07 / 22 / 14	07 / 22 / 20	07 / 22 / 24	07 / 22 / 29	07 / 22 / 34	07 / 22 / 39	07 / 22 / 49	07 / 22 / 59

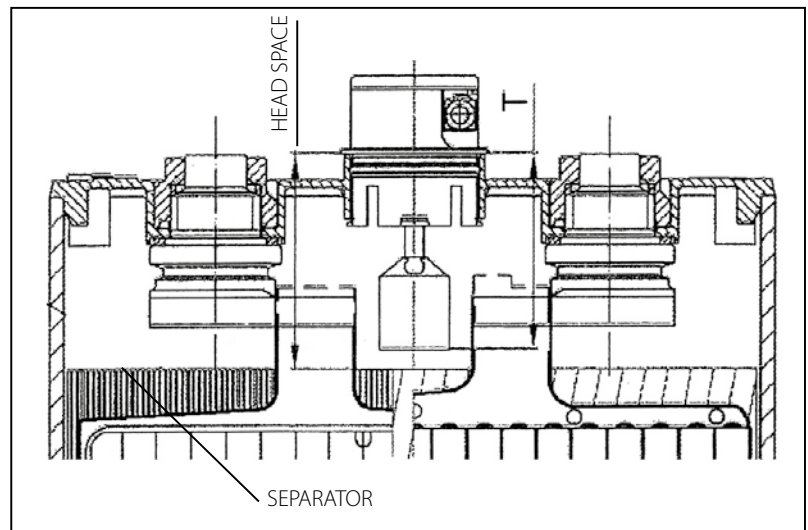
SLIDE RULER



▲ **BAT47527**

INSTALLATION AUTOMATIC FILLING SYSTEM

- 1) Place the adapted floats on the filling plugs, which are determined by the cell type.
The distance from the cell top to the bottom of the float (T) must be at least 5 mm less than the distance from the cell top to the separator (head-space).
- 2) Place the filling plugs in the cell.
- 3) Connect the filling plugs with the adjusted materials.



AUTOMATIC FILLING PLUGS BFS III



▲ **BAT/17368**

Europush - Euro 35 = standard



▲ **BAT/17364**

Screw thread M27



▲ **BAT/17365**

Screw thread M30



▲ **BAT/17366**

Bayonet connection (2 cams)



▲ **BAT/17367**

Bayonet connection (4 cams)



▲ **BAT/19851**

Sealing ring 3.0 mm for BAT/17366



BATTERY ACCESSORIES

COMPONENT LIST FOR TRACTION BATTERIES



▲ **BAT/12418**

10-litre gravity tank with tap
X x Y x H: 272 x 144 x 380

▲ **BAT/12419**

20-litre gravity tank with tap
X x Y x H: 353 x 165 x 446

▲ **BAT/15145**

Kit water tank 20L (Water tank, tube 3 m, indicator, link (F))



▲ **BAT/15832**

60-litre gravity tank with tap
X x Y x H: 460 x 350 x 500

▲ **BAT/15144**

Kit water tank 60L (Water tank, tube 3 m, indicator, link (F))



▲ **BAT/16286**

Water hose
BAT/16287 : Ø 6
BAT/22105 : Ø 8
BAT/16286 : Ø 10
BAT/45391 : Ø 12



▲ **BAT/39588**

Faucet for 60L tank

AUTOMATIC FILLER CAPS WITH CENTRAL DEGASSING



◀ **BAT/16285**

Euro 35 filler cap with level indicator



◀ **BAT/20289**

Screw thread M27

◀ **BAT/20297**

Europush - Euro 35

FEMALE CONNECTOR WATER

type	Connexion A	PA 11	d	AF	l	t	weight
BAT/15227	7 mm	•	24	22	68,3	25	16
BAT/15229	10 mm	•	24	22	73,3	30	17
BAT/15242	13 mm	•	24	22	73,3	30	19



MALE CONNECTOR WATER

type	Connexion A	PA 11	d	AF	l	t	n	weight
BAT/15243	7 mm	•	24	22	66,5	25	20	10
BAT/16298	10 mm	•	24	22	71,5	30	20	10
BAT/15244	13 mm	•	24	22	71,5	30	20	12





▲ **BAT/33823**

Water filter with flow indicator NW6

▲ **BAT/33825**

Water filter with flow indicator NW10



▲ **BAT/12420**

Flow indicator with inner diameters of 6mm and 10mm



▲ **BAT/16290**

Water filter

FEMALE CONNECTOR AIR

type	Connexion A	PA 11	d	AF	l	t	weight
BAT/47530	7 mm	•	24	22	68,3	25	16
BAT/47531	10 mm	•	24	22	73,3	30	17

MALE CONNECTOR AIR

type	Connexion A	PA 11	d	AF	l	t	n	weight
BAT/47532	7 mm	•	24	22	66,5	25	20	10
BAT/47533	10 mm	•	24	22	71,5	30	20	10



VALVE FOR ACID CIRCULATION



▲ **BAT/21004**

Valve for acid circulation AT

TUBE FOR ACID CIRCULATION



▲ **BAT/16331**

Tube for acid circulation. H = 640 mm

L-CONNECTOR



▲ **BAT/16333**

L connector for acid circulation AT (without tube)

T-CONNECTOR



▲ **BAT/16334**

T connector for acid circulation AT (without tube)

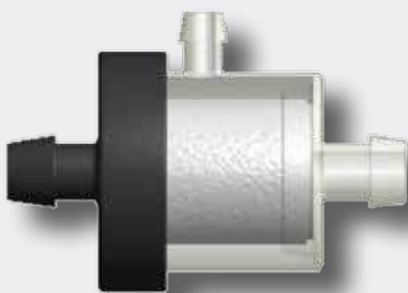
T-CONNECTOR 90° H655



▲ **BAT/34420**

T connector 90° for acid circulation AT (without tube)

FILTER-EX FOR CENTRAL DEGASSING



▲ **BAT/47526**

FilterEX for central degassing

CHARACTERISTICS

The use of the filterEX on batteries prevents:

- a flash-back of Hydrogen fire
- followed by a chain reaction between the battery cells

REQUIREMENTS

Normally, the filterEX is used in combination with the centra! degassing bfs plug (A51210), where all cells are inter-connected through the degassing hoses in addition to the normal water hoses.

FilterEX will protect the battery under any of the following circumstances:

- An ignition from an external source - flame propagation can be avoided by filterEX - mounted at the end of the degassing hose (see drawing no. 1)
- An ignition source inside one of the battery cells - a propagation of the flame can be prevented by filterEX mounted after each plug (see drawing no. 2)

HANDLING

- The piping should be installed in such way that there are not more than 10 bfs plugs connected to one filterEX (see drawing no. 1).
- The filterEX should be replaced after approximately 300 cycles, respectively when the white insert becomes discoloured. Replacement frequency depends on the gas discharge volume per battery cells.